

## Topographic hiking maps of Cajas by [parque-nacional-cajas.org](http://parque-nacional-cajas.org)

The information on this map has been carefully checked and to the best of our knowledge is accurate. However, details are subject to change and the owner of [parque-nacional-cajas.org](http://parque-nacional-cajas.org) cannot be responsible for such changes, or for errors or omission. We cannot be responsible for any consequences, damages, losses or personal injury arising from the use of the maps, data or information on the [parque-nacional-cajas.org](http://parque-nacional-cajas.org) web site.

All the hiking tracks have been recorded in the field with GPS in 1999 and 2000. The provisional South American Datum 1956, UTM 17s have been used. The contour interval is 20 (or 40) meters.

Always register at one of the control points, there are several: the ranger station at laguna Toreadora, the park entrance by road at "el Virgen", the park entrance at laguna LLaviucu or at Guagrahuma.

Be aware of the high altitude in Cajas. Altitude sickness is very common when arriving from Cuenca or Guayaquil. Altitude sickness can be life-threatening.

Cajas consists mainly of grass-land vegetation, lakes (lagunas) and some Polylepis forests. The park is good accessible thanks to the Cuenca – Molleturo – Guayaquil road. Do not be fooled by the easy way of getting in to the park and the overview you may have. With good clear weather orientation is easy. With mist and no sight orientation is very difficult.

The weather can change rapidly in the mountains, certainly in Cajas. Always bring a GPS or compass, a map and good orientation skills. Also bring warm and water proof clothes. Good footwear is indispensable, water proof plastic boots advisable.

Some symbols used on the map:



El refugio, the ranger station at laguna Toreadora. This is a very good place to start and / or end your hikes.



Control point.



Restaurant.



Camping / camp site. No other services than a dry place to pitch your tent.



Parking



Cueva, cave. Can be used to spent the night

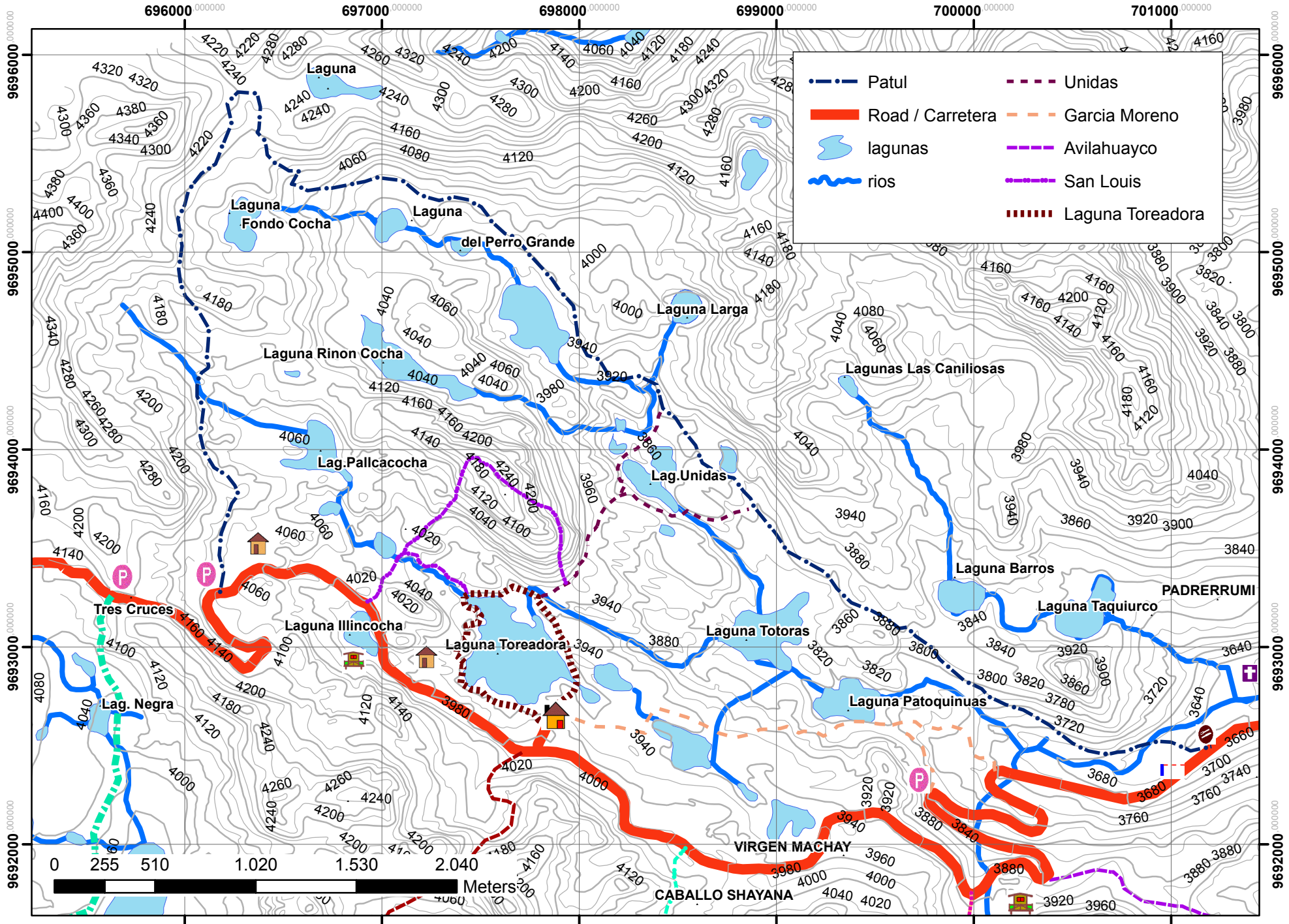


Barraca, barrack.



Cabaña, cottage. Inform in Cuenca at forehand

[info@parque-nacional-cajas.org](mailto:info@parque-nacional-cajas.org)  
[www.parque-nacional-cajas.org](http://www.parque-nacional-cajas.org)



contour interval 20 meters Provisional South American Datum 1956 17s